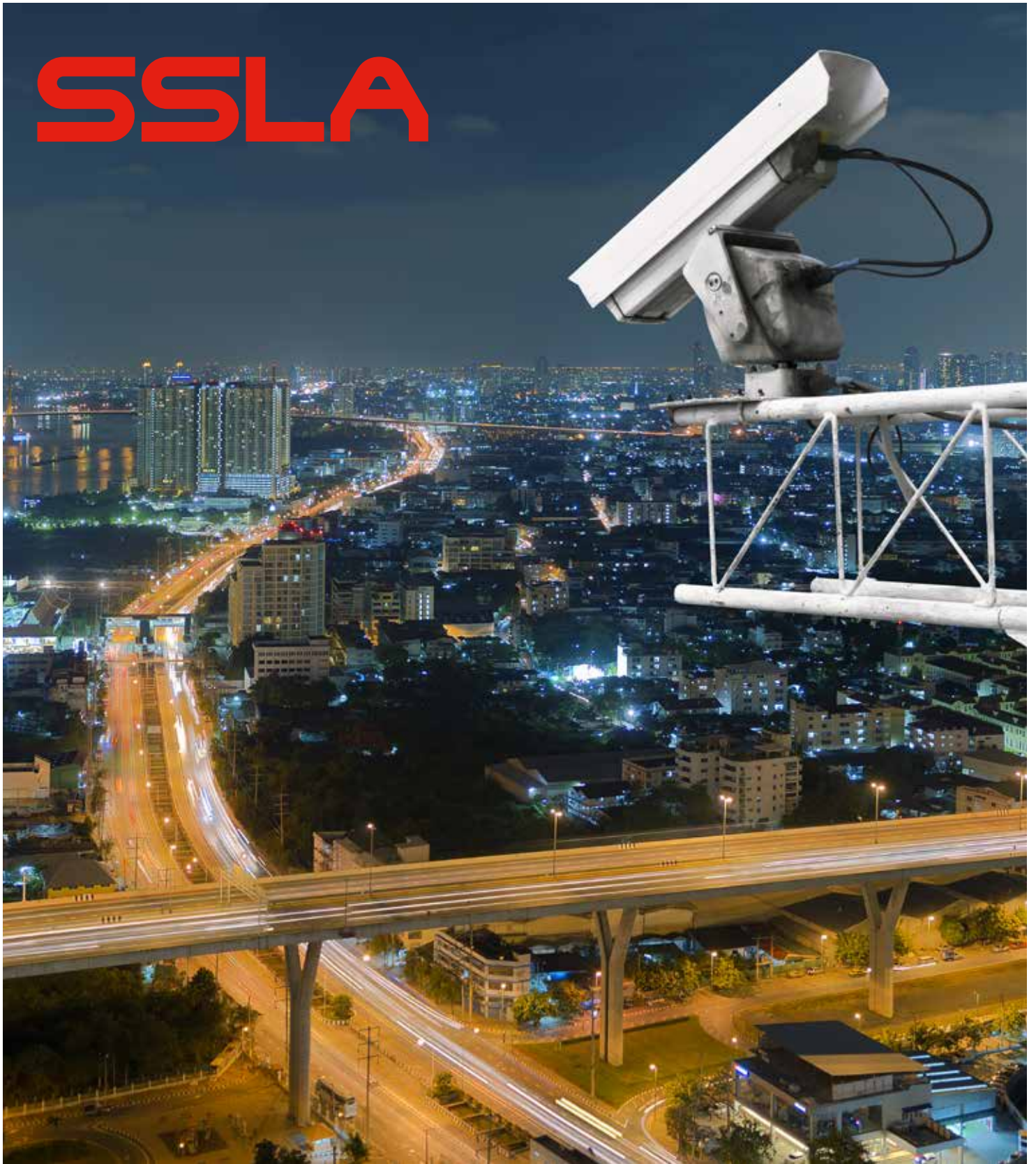


# SSLA



SSLA Battery Range

+  
FIAMM.COM

**FIAMM**  
+ -

**T**HE SSLA BATTERY RANGE HAS BEEN DESIGNED TO COVER A WIDE RANGE OF APPLICATIONS. THE FOOTPRINT OF BATTERIES IS ALSO IDEAL FOR CRITICAL INSTALLATIONS. CONNECTION IS SIMPLE ON SMALLER MODELS SIZES THANKS TO THE EASY 'FAST-ON' TERMINALS.

THE FIAMM SSLA RANGE HAS FOUR DIFFERENT PRODUCT FAMILIES. EACH ONE IS SPECIFICALLY DESIGNED TO OPTIMISE THE BEST SOLUTION FOR THE APPLICATION.

**FG** DESIGNED TO MEET MEDIUM TO LONG DISCHARGE RATES AND WITH A DESIGN LIFE OF 5 YEARS. THE RANGE IS AVAILABLE IN 6V OR 12V BLOCKS WITH A CAPACITY RANGE OF 1.2 - 70AH.

**FGH** DESIGNED FOR MAXIMUM PERFORMANCE IN CRITICAL POWER APPLICATIONS SUCH AS UPS. THE RANGE IS AVAILABLE IN 12V BLOCKS WITH A CAPACITY RANGE OF 5 - 18AH.

**FGHL** CLASSIFIED "LONG LIFE" ACCORDING EUROBAT INDUSTRY STANDARD, WHICH MEANS 10 YEARS DESIGN LIFE. THE RANGE IS AVAILABLE WITH A CAPACITY RANGE OF 5 - 12AH.

**FGC** AN IDEAL SOLUTION FOR CYCLIC APPLICATIONS WITH A DESIGN LIFE OF 5 YEARS. RANGE IS AVAILABLE FROM 12 - 42AH. THESE PRODUCTS ARE DESIGNED TO GIVE A WIDE RANGE OF SOLUTIONS TO ALL APPLICATIONS AND OFFER UNSURPASSED PROVEN RELIABILITY, COMPLIANT WITH THE HIGHEST RECOGNISED INTERNATIONAL STANDARDS. SSLA USES VRLA TECHNOLOGY WITH 99% INTERNAL RECOMBINATION EFFICIENCY, IS NON-SPILLABLE AND MAINTENANCE FREE THEREFORE REQUIRES NO TOPPING UP OF ELECTROLYTE DURING ITS FLOAT-LIFE. SSLA RANGE IS NON-HAZARDOUS FOR AIR/SEA/RAIL/ROAD TRANSPORTATION AND IS 100% RECYCLABLE. SSLA HAS A SELF-DISCHARGE RATE LESS THAN 2% PER MONTH, GUARANTEEING LONG SHELF-LIFE.

\*SSLA (SMALL SEALED LEAD ACID) ARE BATTERIES WITH CAPACITY (AH) TILL MAX 24AH. THE FIAMM SSLA FIAMM RANGE CONTAINS SOME SIZES THAT EXCEED THIS LIMIT. HOWEVER SOME SIZES ARE OF A LARGER CAPACITY DUE TO APPLICATIONS.

MAIN APPLICATIONS:



UPS



SECURITY SYSTEMS AND EMERGENCY LIGHTING



LIGHT TRACTION



LEISURE



## SPECIFICATIONS

Special lead calcium tin alloy grid, designed to resist corrosion and provide short recharge time

VRLA AGM technology using low resistance high microporous fiberglass separators

Leak resistant post seal, faston, flag and threaded female, terminals with high conductivity and maximum torque resistance

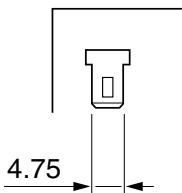
One-way safety relief valves allow gas to escape and prevent the ingress of oxygen

ABS plastic (for FGHL range flame retardant ABS plastic to IEC 707 FV0 and UL94 FV0 - LOI greater than 28%)

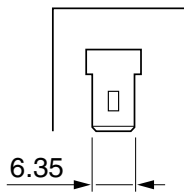
Installation in any orientation (excluding permanently inverted)

## TERMINALS TYPE

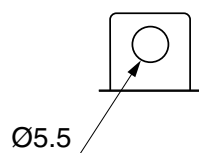
■ Faston 4.8



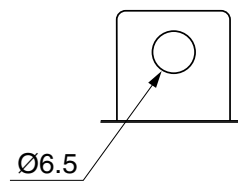
■ Faston 6.3



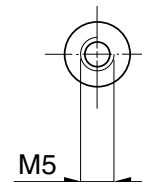
■ Flag Ø 5.5



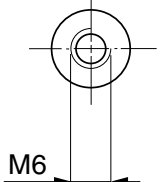
■ Flag Ø 6.5



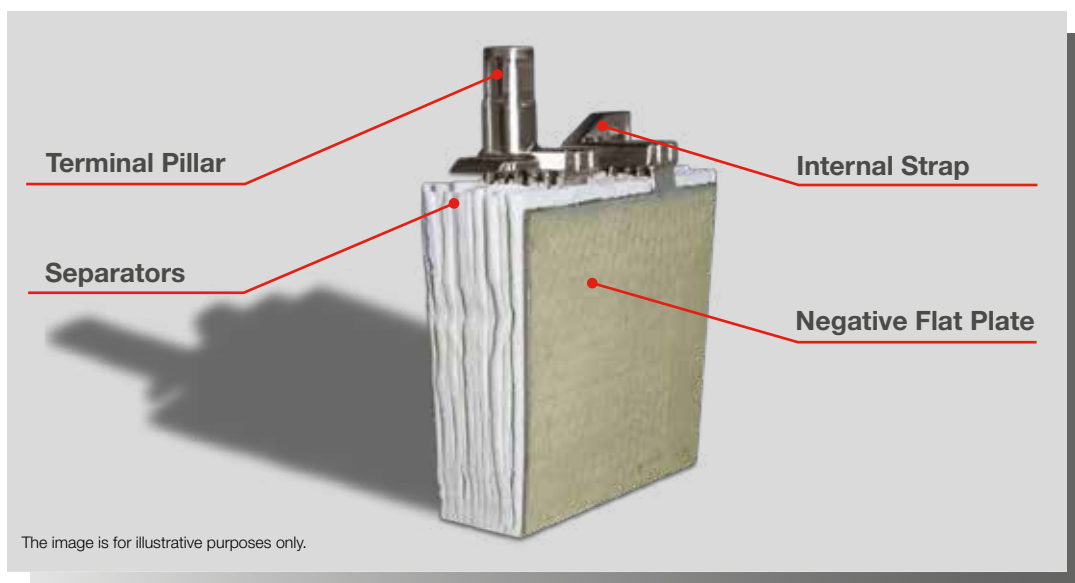
■ Round M5



■ Round M6



## TECHNOLOGY



FIAMM SSLA RANGE USE AGM (ABSORBED GLASS MAT) TECHNOLOGY. THE ELECTROLYTE IS ABSORBED IN FIBERGLASS SEPARATORS WITH 99% INTERNAL GAS RECOMBINATION EFFICIENCY. BLOCS ARE GRANTS NON-SPILLABLE AND MAINTENANCE FREE THEREFORE REQUIRES NO TOPPING UP OF ELECTROLYTE DURING ITS WHOLE LIFE. LOW SELF-DISCHARGE ALLOWS 6 MONTHS SHELF LIFE.



BATTERY TYPE	VDS*	NOMINAL VOLTAGE (V)	CAPACITY (Ah) 20 H to 1.75 VPC at 25°C	NOMINAL DIMENSIONS (mm)				TYPICAL WEIGHT (kg)	TERMINAL TYPE
				Length	Width	Height	Height (terminal)		
FG 10121		6	1.2	97	24	51	58	0.28	Faston 4.8
FG 10301		6	3.0	134	33	60	66	0.60	Faston 4.8
FG 10381		6	3.8	66	33	119	125	0.61	Faston 4.8
FG 10451		6	4.5	70	47	101	106	0.72	Faston 4.8
FG 10721		6	7.2	150	34	94	100	1.2	Faston 4.8
FG 11201	•	6	12	151	50	93	99	1.8	Faston 4.8
FG 11202	•	6	12	151	50	93	99	1.8	Faston 6.3
FG 20121	•	12	1.2	97	48	51	57	0.54	Faston 4.8
FG 20121A		12	1.2	97	43	51	58	0.52	Faston 4.8
FG 20201	•	12	2.0	178	35	60	65	0.80	Faston 4.8
FG 20271		12	2.7	79	56	99	105	1.1	Faston 4.8
FG 20341		12	3.4	134	65	60	66	1.3	Faston 4.8
FG 20451		12	4.5	90	70	101	107	1.5	Faston 4.8
FG 20721	•	12	7.2	151	65	95	100	2.3	Faston 4.8
FG 20722	•	12	7.2	151	65	95	100	2.3	Faston 6.3
FG 21201	•	12	12	151	98	95	100	3.7	Faston 4.8
FG 21202	•	12	12	151	98	95	100	3.7	Faston 6.3
FG 21803	•	12	18	181	76	167	163	5.6	Flag Ø5.5
FG 22703	•	12	27	166	175	125	123	8.2	Flag Ø5.5
FG 24204	•	12	42	197	165	170	168	13.5	Flag Ø6.5
FG 26504	•	12	65	348	167	177	175	21.0	Flag Ø6.5

\* Model available also with VDS



BATTERY TYPE	NOMINAL VOLTAGE (V)	CAPACITY (Ah) 20 H to 1.75 VPC at 25°C	NOMINAL DIMENSIONS (mm)				TYPICAL WEIGHT (kg)	TERMINAL TYPE
			Length	Width	Height	Height (terminal)		
FGC 21202	12	12	151	98	95	100	4.0	Faston 6.3
FGC 21803	12	18	181	76	167	163	6.3	Flag Ø5.5
FGC 22705	12	27	166	175	125	116	9.3	Round M5
FGC 23505	12	35	197	130	159	157	11.1	Round M5
FGC 24207	12	42	197	165	171	153	13.4	Round M6

# FGH

BATTERY TYPE	NOMINAL VOLTAGE (V)	CAPACITY (Ah) 20H to 1.75 VPC at 25°C	NOMINAL DIMENSIONS (mm)				TYPICAL WEIGHT (kg)	TERMINAL TYPE
			Length	Width	Height	Height (terminal)		
12 FGH 23 slim	12	5.0	151	51	95	100	1.9	Faston 4.8
12 FGH 23	12	5.0	90	70	101	107	1.8	Faston 6.3
12 FGH 36	12	9.0	151	65	95	100	2.7	Faston 6.3
12 FGH 50	12	12	151	98	95	100	3.8	Faston 6.3
12 FGH 65	12	18	181	76	167	165	5.6	Flag Ø5.5

# FGHL

BATTERY TYPE	NOMINAL VOLTAGE (V)	CAPACITY (Ah) 20H to 1.75 VPC at 25°C	NOMINAL DIMENSIONS (mm)				TYPICAL WEIGHT (kg)	TERMINAL TYPE
			Length	Width	Height	Height (terminal)		
12 FGHL 22	12	5.0	90	70	101	107	1.9	Faston 6.3
12 FGHL 28	12	7.2	151	65	95	100	2.6	Faston 6.3
12 FGHL 34	12	8.4	151	65	95	100	2.7	Faston 6.3
12 FGHL 48	12	12	151	98	95	100	4.0	Faston 6.3

## ELECTRICAL CHARACTERISTICS

Float Voltage: 2.25-2.30 V/cell at 25°C  
 Boost Voltage for cyclic use: 2.40-2.50 V/cell at 25°C  
 Float Voltage Compensation with Temperature: -2.5 mV/cell/°C  
 Self-Discharge at 25°C: <2%/month

## STANDARDS

IEC 60896 Part 21 - VRLA methods of testing  
 IEC 60896 Part 22 - VRLA requirements  
 Eurobat "3-5 years standard commercial" for FG FGH  
 FGC and "10-12 years long life" for FGHL  
 UL Recognized

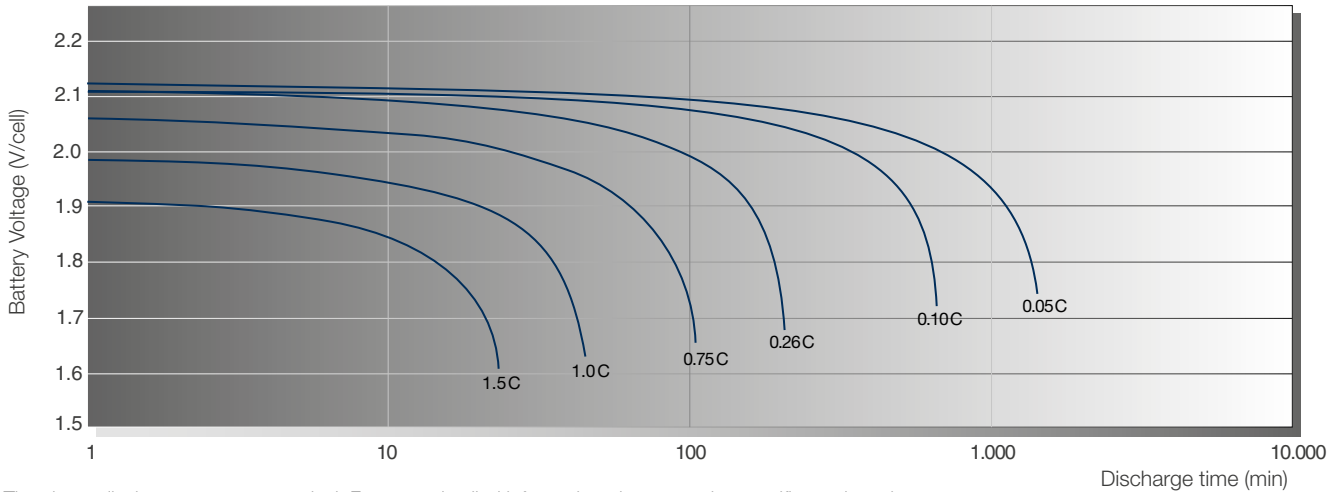
## CERTIFICATIONS

ISO 9001  
Quality Management System

ISO 14001  
Environmental Management System

ISO 45001  
Workplace Safety & Health

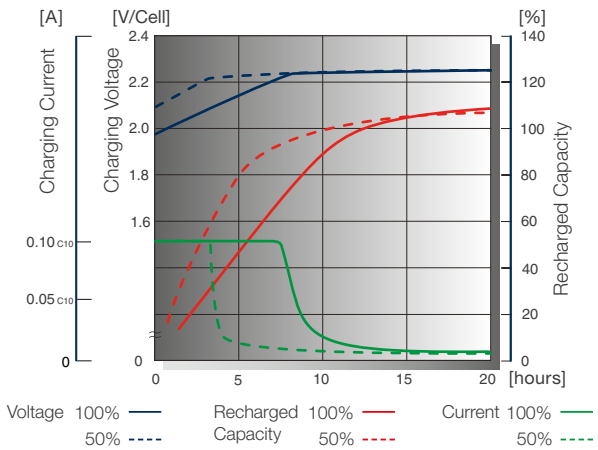
### DISCHARGE CURVES at different current / final voltage (at 25°C)



The above discharge curves are typical. For more detailed information please see the specific product sheets.

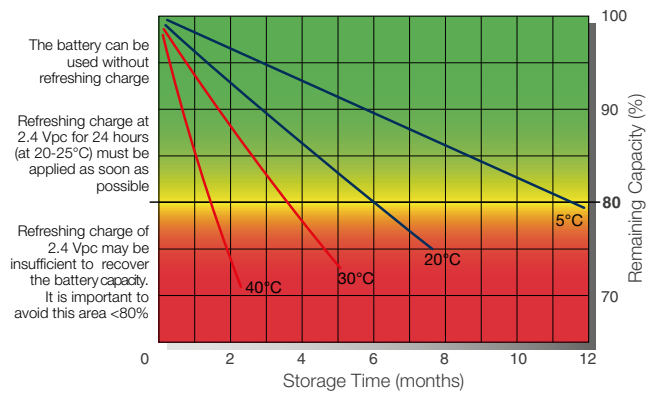
### TYPICAL CHARGE CURVES

Battery Voltage and Charge Time for Standby Use (at 25°C)



### STORAGE

Capacity loss during storage at various temperatures



#### FIAMM Asia Pacific PTE LTD

21 Toh Guan Road East, #09-08  
608609 Singapore - Republic of Singapore  
Tel. +65 68676150  
Fax +65 68626550

infostandby.asia@fiamm.com  
www.fiamm.com

[in linkedin.com/company/fiammenergytechnology](https://www.linkedin.com/company/fiammenergytechnology)  
[yt youtube.com/user/FIAMMvideo](https://www.youtube.com/user/FIAMMvideo)  
[fb fiamm.batteries](https://www.facebook.com/fiamm.batteries)  
[tw fiammbatteries](https://www.twitter.com/fiammbatteries)