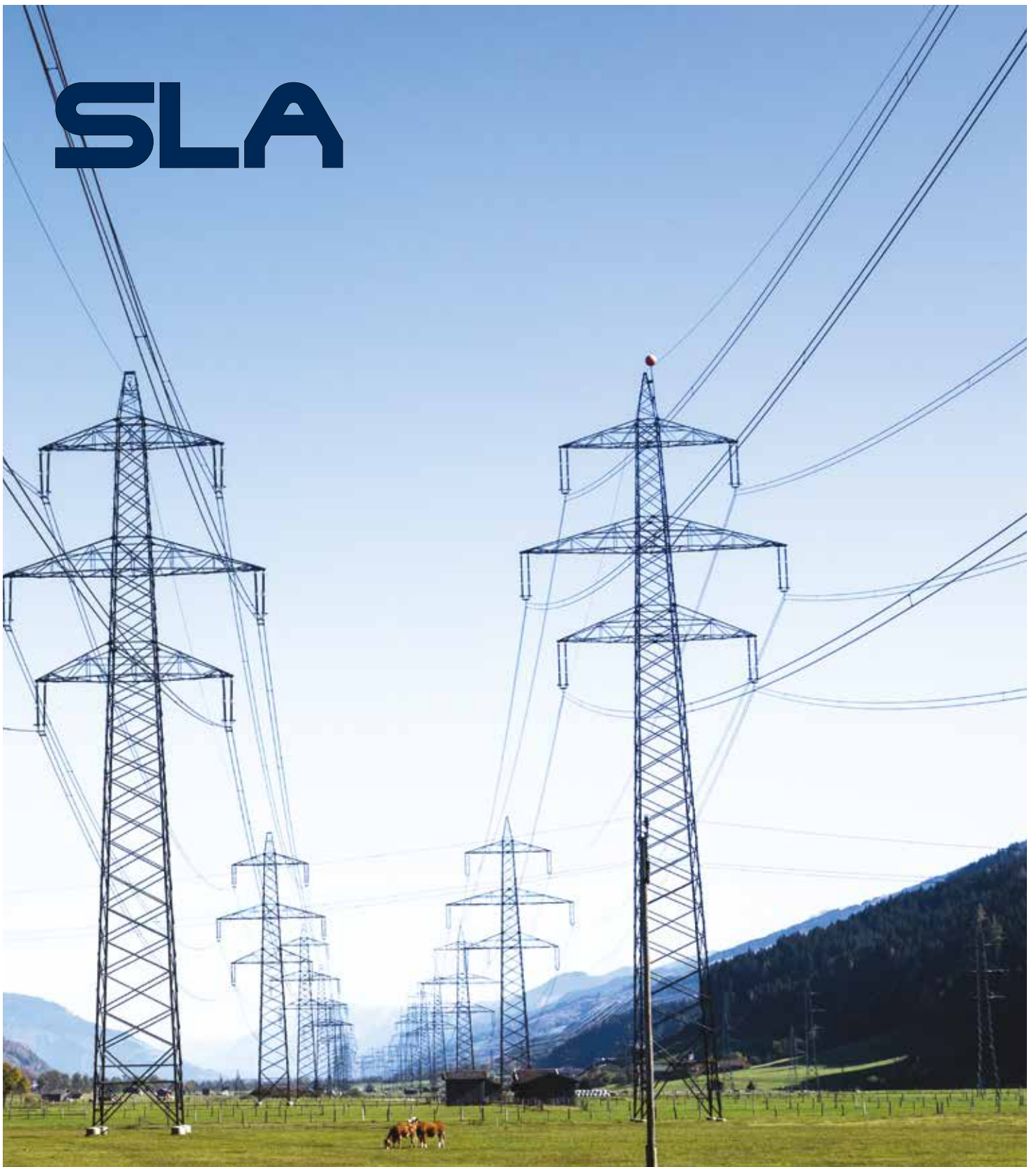


SLA



SLA Battery Range

+
FIAMM.COM

FIAMM
+ -

F IAMM SLA RANGE OF VALVE REGULATED BATTERIES HAS BEEN DESIGNED FOR APPLICATIONS DEMANDING THE HIGHEST LEVEL OF RELIABILITY AND SECURITY.

FIAMM HIGH INTEGRITY SLA RANGE HAS BEEN DESIGNED FOR THE MOST CRITICAL APPLICATIONS, OFFERING UNSURPASSED PROVEN RELIABILITY, COMPLIANT WITH THE HIGHEST RECOGNISED INTERNATIONAL STANDARDS. SLA USES VRLA TECHNOLOGY WITH 99% INTERNAL RECOMBINATION EFFICIENCY, IS NON-Spillable AND MAINTENANCE FREE THEREFORE REQUIRES NO TOPPING UP OF ELECTROLYTE DURING ITS FLOAT- LIFE. SLA RANGE IS NON-HAZARDOUS FOR AIR/SEA/RAIL/ROAD TRANSPORTATION AND IS 100% RECYCLABLE. SLA HAS A SELF-DISCHARGE RATE LESS THAN 2% PER MONTH, GUARANTEEING LONG SHELF-LIFE.



MAIN APPLICATIONS:



TELECOMMUNICATION



UPS & DATA CENTER



UTILITIES & INDUSTRY



RAILWAYS



OIL & GAS

SPECIFICATIONS

Special lead calcium tin alloy grid is designed to meet the demanding requirements of telecom and power generation markets

VRLA AGM technology using low resistance high microporous fiberglass separators

Leak resistant post seal, threaded female M6/M8/M10 terminals with high conductivity and maximum torque resistance

One-way safety relief valves allow gas to escape and prevent the ingress of oxygen.

Flame arrestors prevent sparks or flames entering the battery

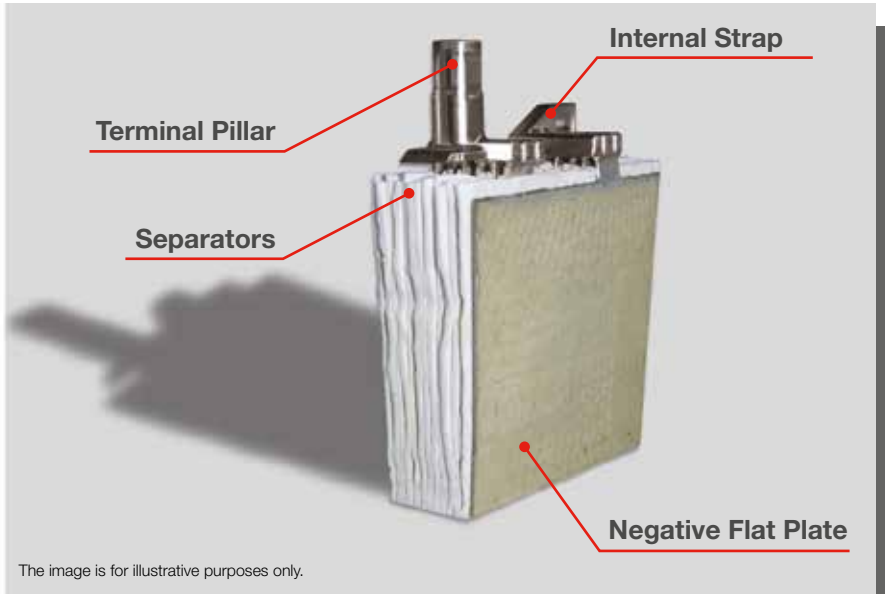
Flame retardant ABS plastic to IEC 707 FV0 and UL94 FV0 (LOI greater than 28%)

Thick walled plastics designed for superior mechanical strength

Heat sealed box to lid weld for superior integrity

Installation in any orientation (excluding permanently inverted)

TECHNOLOGY



The image is for illustrative purposes only.

FIAMM SLA RANGE USE AGM (ABSORBED GLASS MAT) TECHNOLOGY. THE ELECTROLYTE IS ABSORBED IN FIBERGLASS SEPARATORS WITH 99% INTERNAL GAS RECOMBINATION EFFICIENCY. BLOCS ARE GRANTS NON-SPILLABLE AND MAINTENANCE FREE THEREFORE REQUIRES NO TOPPING UP OF ELECTROLYTE DURING ITS WHOLE LIFE. LOW SELF-DISCHARGE ALLOWS 6 MONTHS SHELF LIFE.

BATTERY TYPE	NOMINAL VOLTAGE (V)	CAPACITY AT 20°C (Ah) 10 HRS TO 1.8 VPC	SHORT CIRCUIT CURRENT (A) IEC 60896 21-22	INTERNAL RESISTANCE (mOhm) IEC 60896 21-22	DIMENSIONS (mm)			TYPICAL WEIGHT (kg)
					Length	Width	Height	
12 SLA 25 L	12	25	650	19.8	218	129	165	11
12 SLA 50 L	12	50	1550	8.3	261	174	217	21
12 SLA 80 L	12	80	2144	6.0	302	174	217	29
12 SLA 110 L	12	110	3000	4.2	379	174	217	37
6 SLA 130 L	6	130	4200	1.55	208	174	247	23
6 SLA 180 L	6	180	4000	1.56	308	174	218	30
6 SLA 200 L	6	200	4600	1.35	308	174	247	36
2 SLA 260 L	2	260	3400	0.63	208	174	218	16
2 SLA 340 L	2	340	7900	0.25	208	174	218	21
2 SLA 430 L	2	430	9300	0.19	208	174	247	25
2 SLA 540 L	2	540	10600	0.20	308	174	218	31
2 SLA 620 L	2	620	14500	0.14	308	174	247	36
2 SLA 800**	2	820	9700	0.206	254	210	495	59
2 SLA 1000**	2	1025	12000	0.165	254	210	495	72
2 SLA 1500**	2	1500	16000	0.125	275	210	660	105
2 SLA 2000**	2	2000	20000	0.102	368	218	660	137

** this cell must be installed horizontally

ELECTRICAL CHARACTERISTICS

Float Voltage: 2.27 V/cell at 20°C

Boost Voltage: 2.40 V/cell

Float Voltage Compensation with Temperature: -2.5 mV/cell/°C

Self-Discharge at 20°C: <2%/month

STANDARDS

IEC 60896 Part 21 - VRLA methods of testing

IEC 60896 Part 22 - VRLA requirements

Telcordia GR-4228 - VRLA battery string certification

BS 6334 / UL 94 V0 / IEC 707 FV0 materials flammability

Bellcore TR-NWT-000766 - VRLA battery generic requirements

Eurobat ">12 years VERY LONG LIFE"

CERTIFICATIONS

ISO 9001
Quality Management System

ISO 14001
Environmental Management System

ISO 45001
Workplace Safety & Health

ACCESSORIES

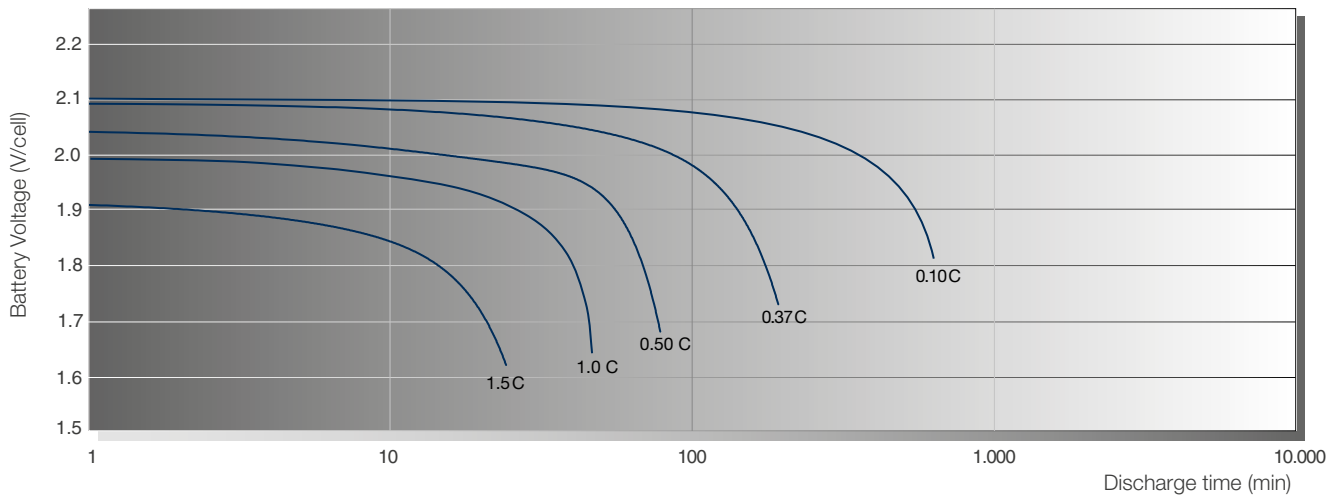
RVS
(remote venting system) for IP rated applications which require remote gassing

Rack for battery installation
(standard and anti-seismic)

Cabinets for battery installation
(including electrical protections and disconnection)

Battery monitoring systems

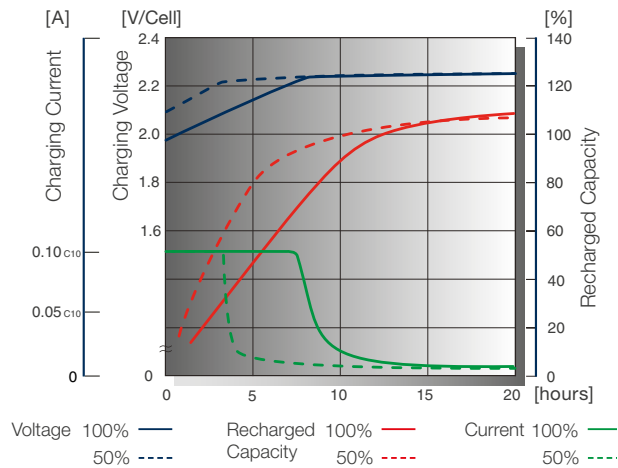
DISCHARGE CURVES at different current / final voltage (at 20°C)



The above discharge curves are typical. For more detailed information please see the specific product sheets.

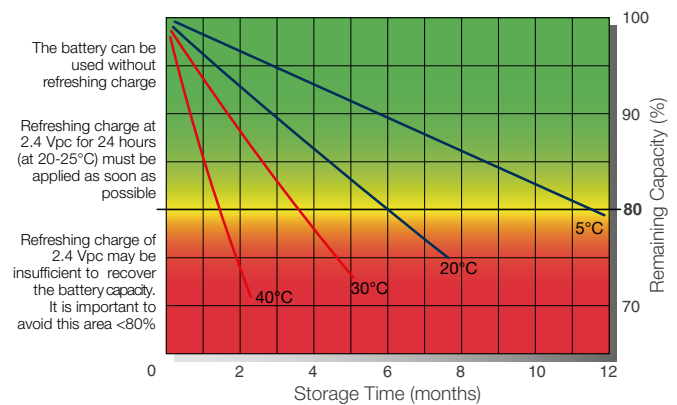
TYPICAL CHARGE CURVES

Battery Voltage and Charge Time for Standby Use (at 20°C)



STORAGE

Capacity loss during storage at various temperatures



Headquarters
FIAMM Energy Technology S.p.A.
Viale Europa, 75
36075 Montecchio Maggiore (VI) - Italy
Tel. +39 0444 709311
Fax +39 0444 694178

info.standby@fiamm.com
www.fiamm.com

linkedin.com/company/fiammenergytechnology
 youtube.com/user/FIAMMvideo
 fiamm.batteries
 fiammbatteries